



Lindab **Plexus**

Hurtig installationsvejledning



Hurtig installationsvejledning

Plexus

Symboler



Varmt vand



Håndkraft



Koldt vand



Tung byrde - opgave til 2 mand - Det anbefales at bruge en lift til montering.

Værktøj



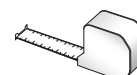
Kniv



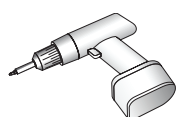
Handsker



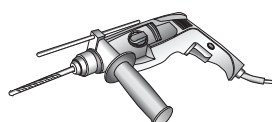
Sikkerhedssko



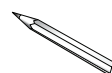
Målebånd



Skruemaskine



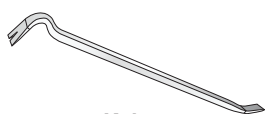
Slagboremaskine



Blyant



Svensk nøgle



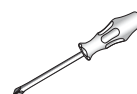
Koben



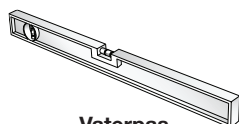
Tectite værktøj 12 mm
(Varenummer: 884087)



Lille tectite værktøj 12 mm
(Varenummer: 646881)



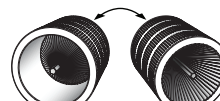
Skruetrækker



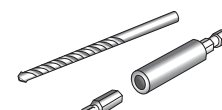
Vaterpas



Lindab PC410
(Varenummer: 103344)



Afgrater værktøj



Bits og bor



Støvsuger

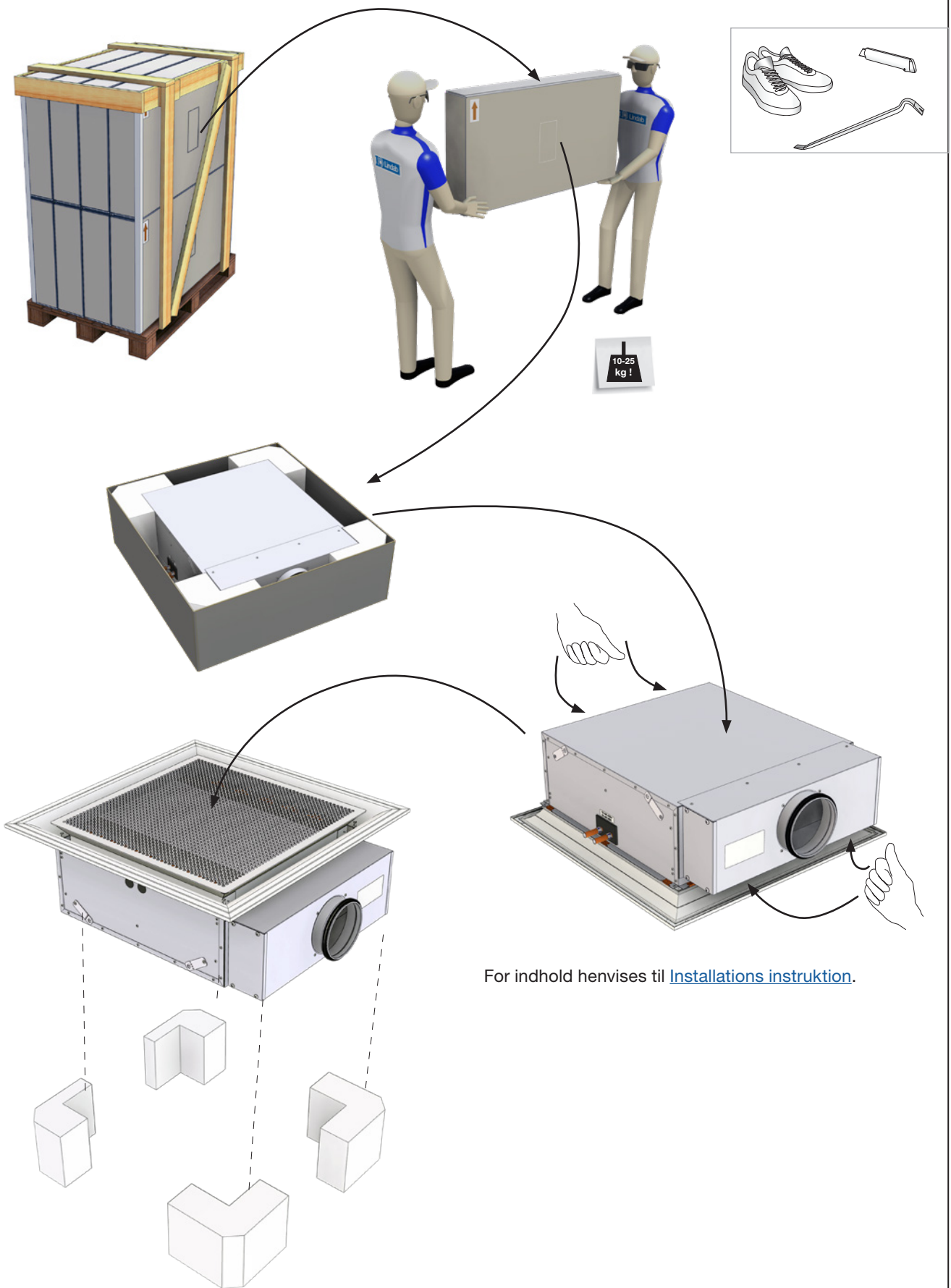


Støvkost

Hurtig installationsvejledning

Plexus

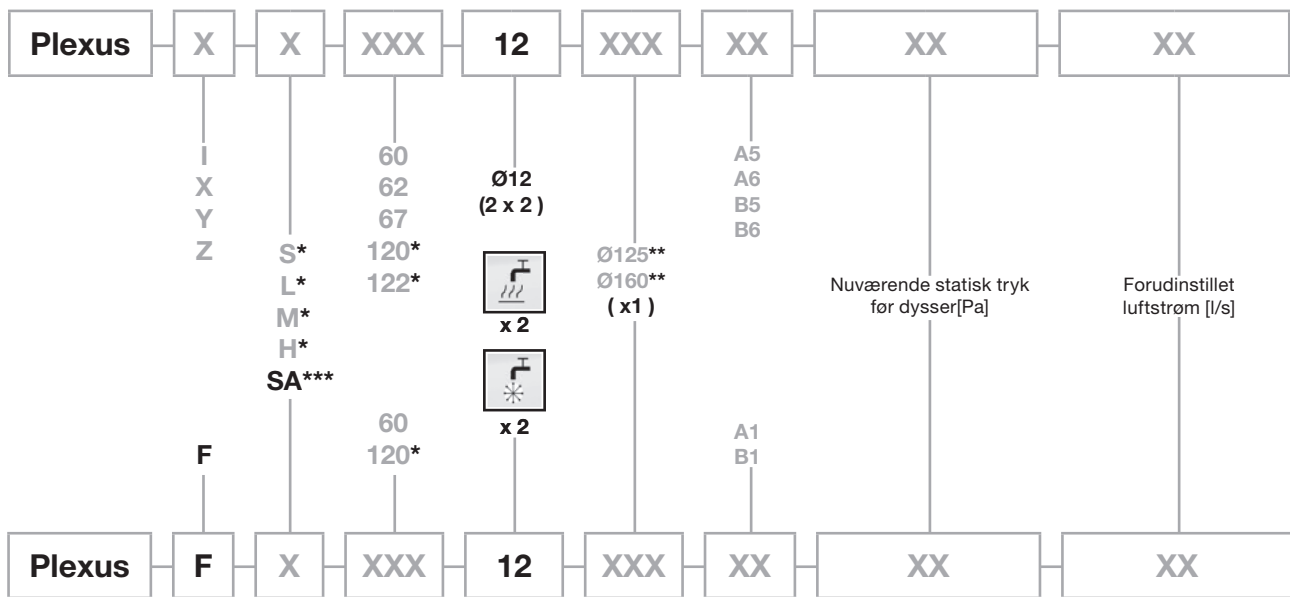
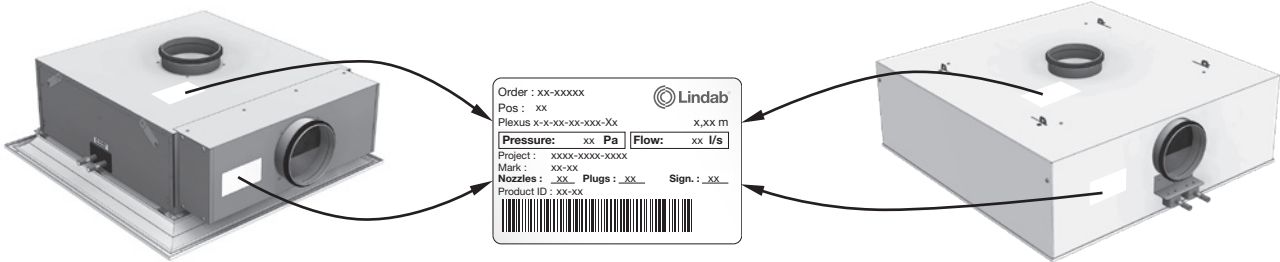
Indpakning og Udpakning



Hurtig installationsvejledning

Plexus

Label for ordrekode



* 120 og 122 er kun mulig hvis S-model er valgt. L, M og H model er kun mulig i 60, 62 og 67 versioner.

**Ø_H (Sidetilslutning luft (A)) = Kun Ø125 kan vælges.

**Ø_V (Toptilslutning luft (B)) = Kun Ø125 for S-model. Kun Ø160 for L, M og H Modeller). (Se også dimensionstabel 3.2 i [installationsinstruktion](#)).

***Type SA (integreret stål ramme) er kun mulig for version ISA-60 og ISA120 for T24/T15 Lay-In. (lofttype 1).

Produkt label

Date	P _{stat} [Pa]	q _v [l/s]	1	2	3	4	Signature

Rev. 04-2012

Position of JetCone adjustment pins

ΔP_{stat} [Pa] Plexus S60

q_v [l/s]

q_v [m³/h]

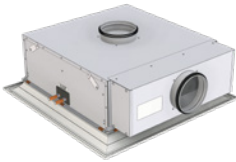
Hurtig installationsvejledning

Plexus

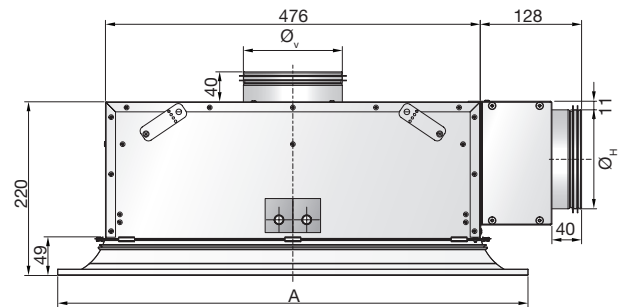
Dimensioner

Plexus I, (X, U, Y, Z)

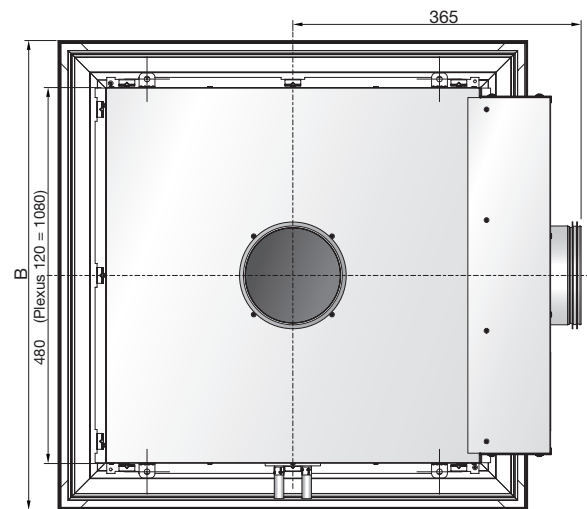
I 60



I 120



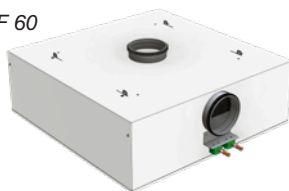
	A mm	B mm	Ø _H mm	Ø _V mm	
I (S, SA, L, M, H) 60	594	594	125	125/160	1, 2, 3, 8
X (S, L, M, H) 60	599	599	125	125/160	4, 5, 6, 7, 14
U (S, L, M, H) 60	599	599	125	125/160	USA 2' x 2'
Y (S, L, M, H) 60	575	575	125	125/160	9, 11
Z (S, L, M, H) 60	584	584	125	125/160	10
I (S, L, M, H) 62	619	619	125	125/160	21
I (S, L, M, H) 67	669	669	125	125/160	31, 32
I S/SA 120	594	1194	125	160	1, 2, 3, 8
X S 120	599	1199	125	160	4, 5, 6, 7, 14
Y S 120	575	1174	125	160	9, 11
Z S 120	584	1183	125	160	10
U S 120	599	1209	125	160	USA 2' x 2'
I S 122	619	1244	125	160	21



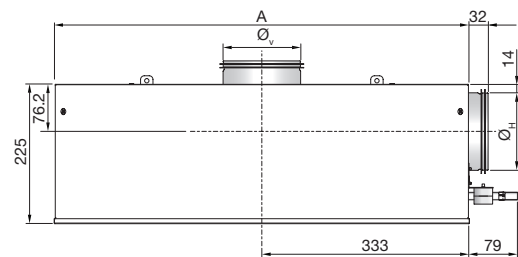
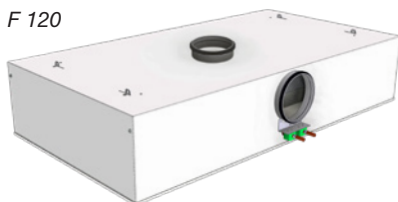
! Plexus (I, X, Y, Z) - (S) => Ø_v = 125 Plexus (I, X, U, Y, Z) - (L, M, H) => Ø_v = 160

Plexus F

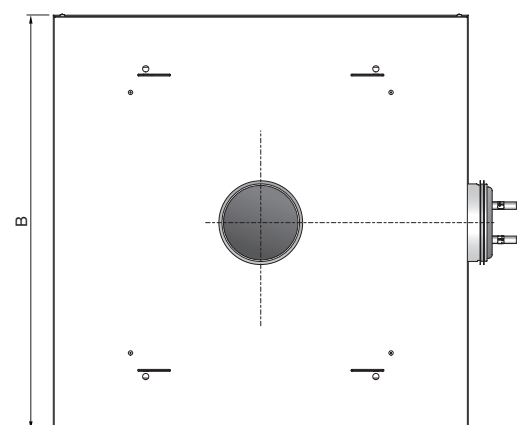
F 60



F 120



	A mm	B mm	Ø _H mm	Ø _V mm
F (S, L, M, H) 60	669	669	125	125/160
F S 120	669	1269	125	160



! Plexus (F) - (S) => Ø_v = 125 Plexus (F) - (L, M, H) => Ø_v = 160

Hurtig installationsvejledning

Plexus

Materiale data

Type	Plexus I 60	Plexus I 120		Plexus F 60	Plexus F 120	
	Køling / Varme	Køling / Varme		Køling / Varme	Køling / Varme	
Vægt (tør), kg	11,6	18,6	20	17,2	28,9	30,3
Vandmængde, Køling, l	1,0	1,3		1,0	1,3	
Vandmængde, Varme, l	0,2	0,4		0,2	0,4	
Vandmængde, kun køling, l	1,2	1,3		1,2	1,3	
Kobberrørs kvalitet	EN-12735-2-CU-DHP					
Trykklasse	PN10					

Miljøvare deklarerationer

Følg venligst nedenstående links

- [Byggevaredeklaration](#)
- [Overensstemmelseserklæring](#)
- [Eurovent certifikat](#)

Trykklasse

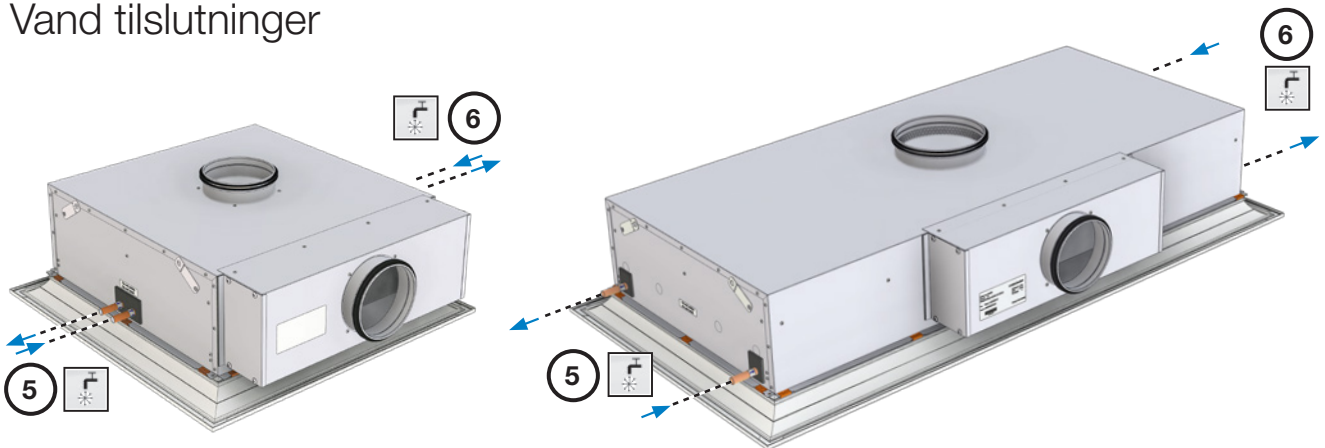
Samtlige produkter i Lindabs vandbårne sortiment (Køle/ varme), produceres så de opfylder trykklasse PN10 i henhold til EN 1333: 2006.

Dette betyder, at det maksimale arbejdstryk for produkterne ved en vandtemperatur på 20°C, ikke må overstige 10 bar.

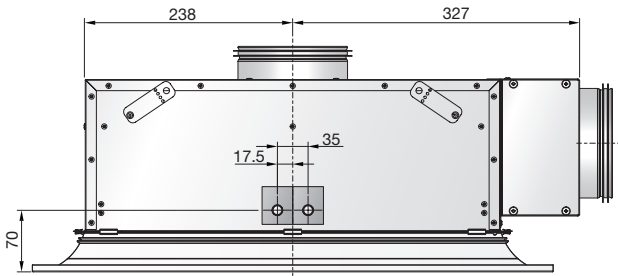
Hurtig installationsvejledning

Plexus

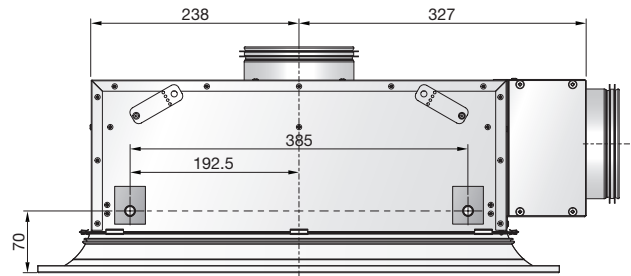
Vand tilslutninger



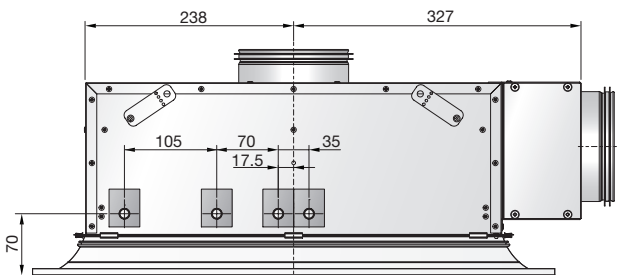
Plexus 60: I, (X, U, Y, Z)
Køling eller varme (Standard)



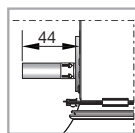
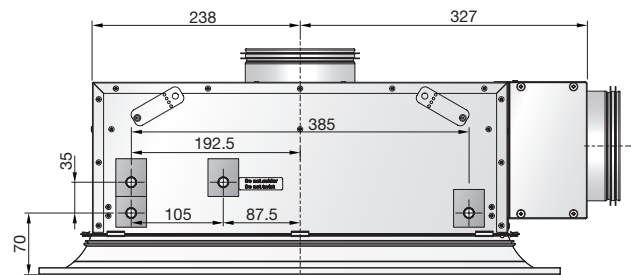
Plexus 120: I, (X, U, Y, Z)
Køling eller varme (Standard)



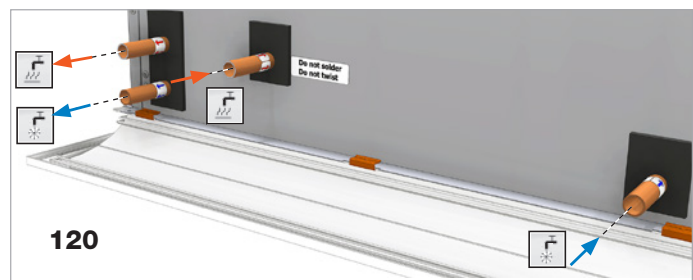
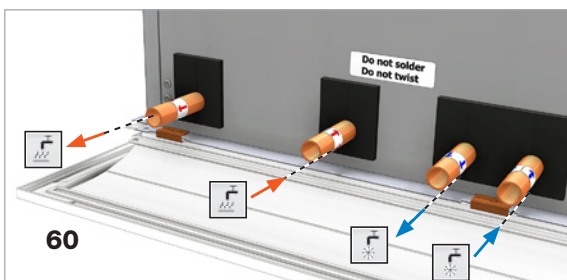
Plexus 60: I, (X, U, Y, Z).
Køling og varme



Plexus 120: I, (X, U, Y, Z)
Køling og varme



Plexus I, (X, U, Y, Z). 60/120, Køling og varme. Indløb og udløb

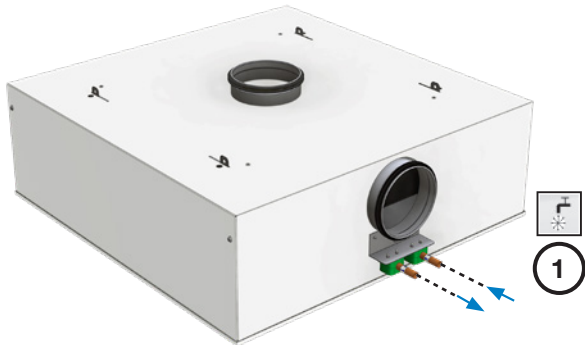


Hurtig installationsvejledning

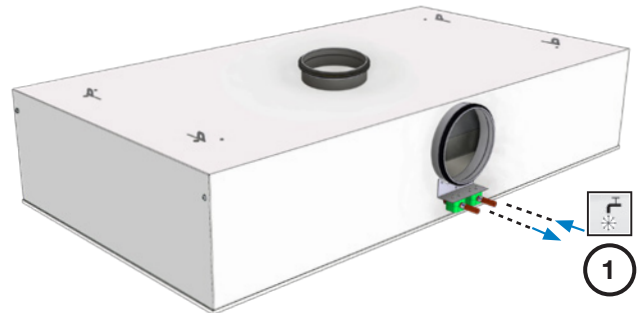
Plexus

Vand tilslutninger

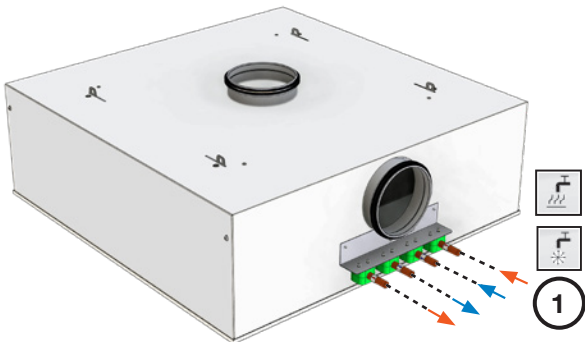
Plexus F 60: Køling eller varme (Standard)



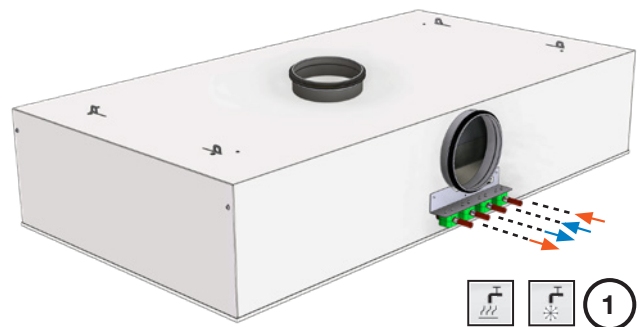
Plexus F 120: Køling eller varme (Standard)



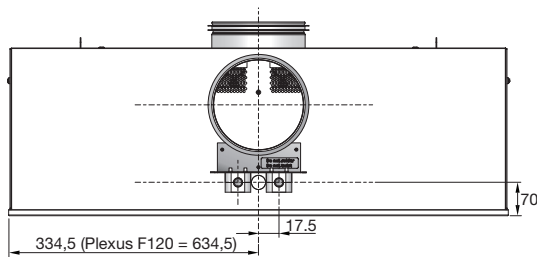
Plexus F 60: Køling og varme



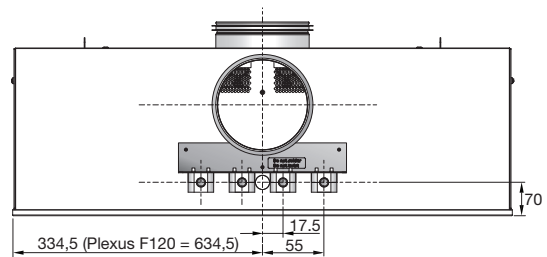
Plexus F 120: Køling og varme



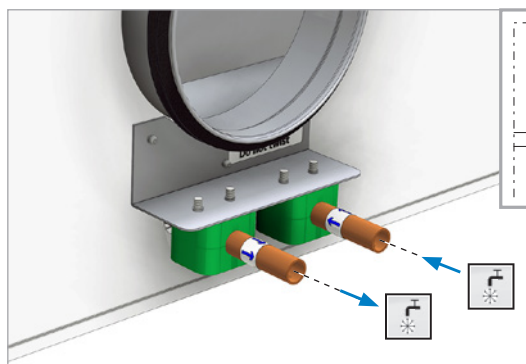
Plexus F 60/120: Køling eller varme (standard)



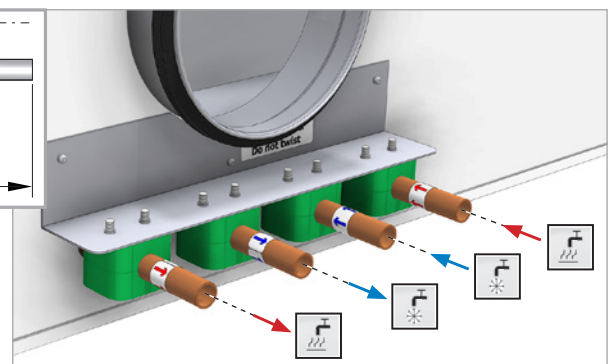
Plexus F 60/120: Køling og varme



Plexus F 60/120: Køling eller varme (standard)



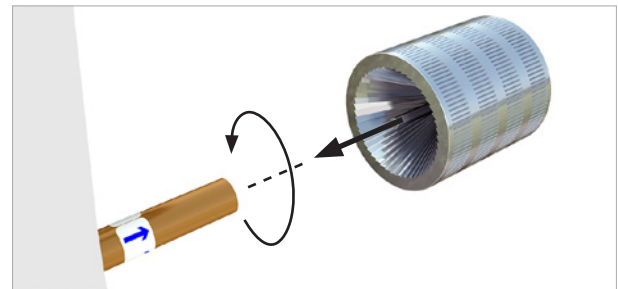
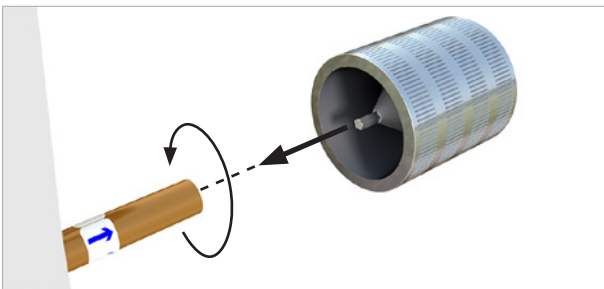
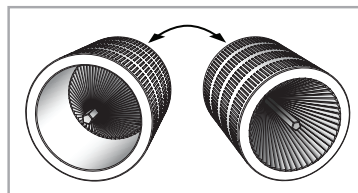
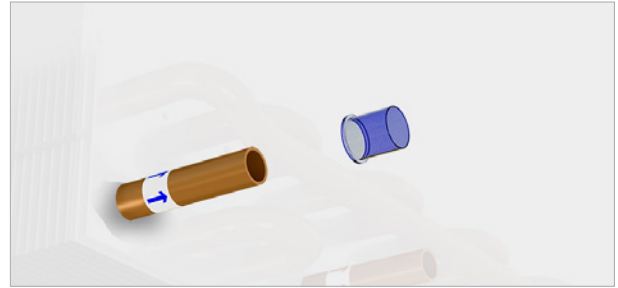
Plexus F 60/120: Køling og varme



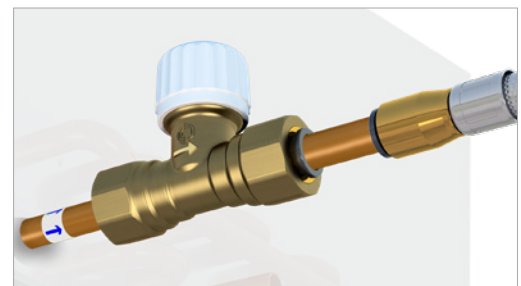
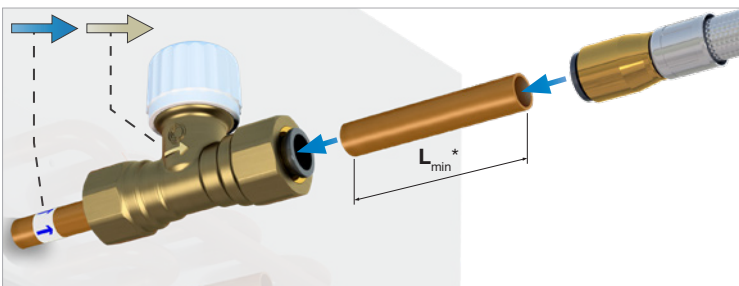
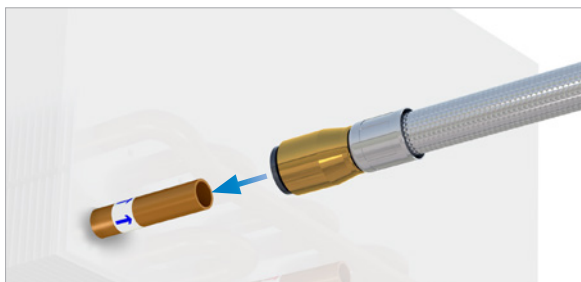
Hurtig installationsvejledning

Plexus

Før installation



Flex slanger og Push on ventiler

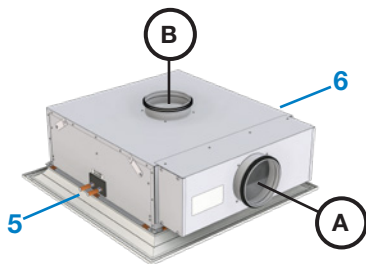


* $L_{min} = 70 \text{ mm}$ (for at sikre, at du kan åbne koblingerne igen).
Lindab fleksible slanger fås med lige ende (han) til direkte forbindelse til Lindab ventiler også.

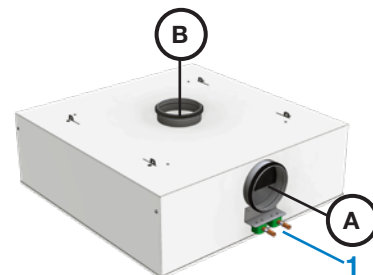
Hurtig installationsvejledning

Plexus

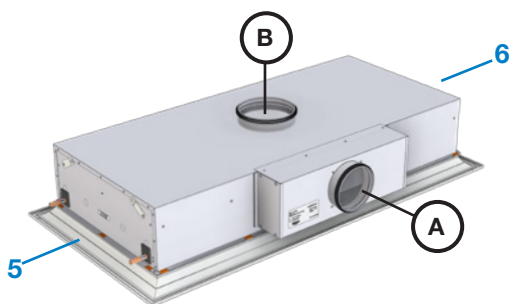
Tilslutninger



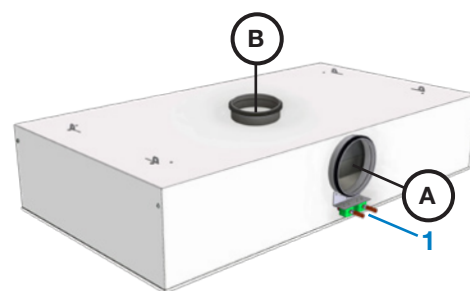
I, (X, U, Y, Z) 60



F60



I, (X, U, Y, Z) 120



F120

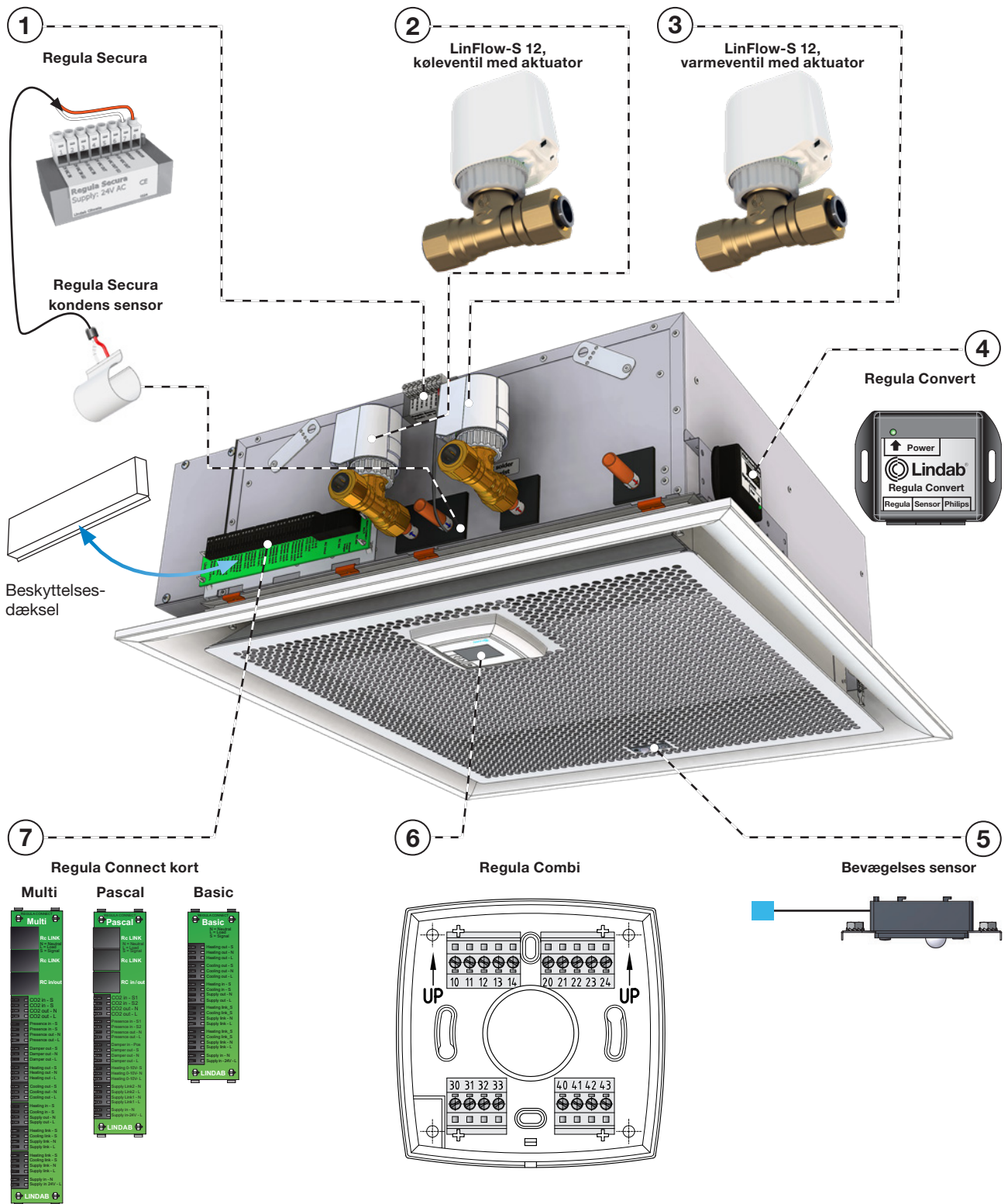
Mulige Plexus I, (X, U, Y, Z) tilslutninger,
Tilluft (A, B) og vand (5, 6).
A5, A6, B5, B6

Mulige Plexus F tilslutninger,
Tilluft (A, B) og vand (1).
A1, B1

Hurtig installationsvejledning

Plexus

EL - tilslutninger og ventiler

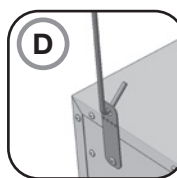
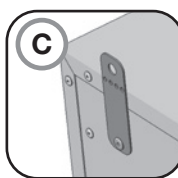
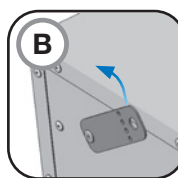
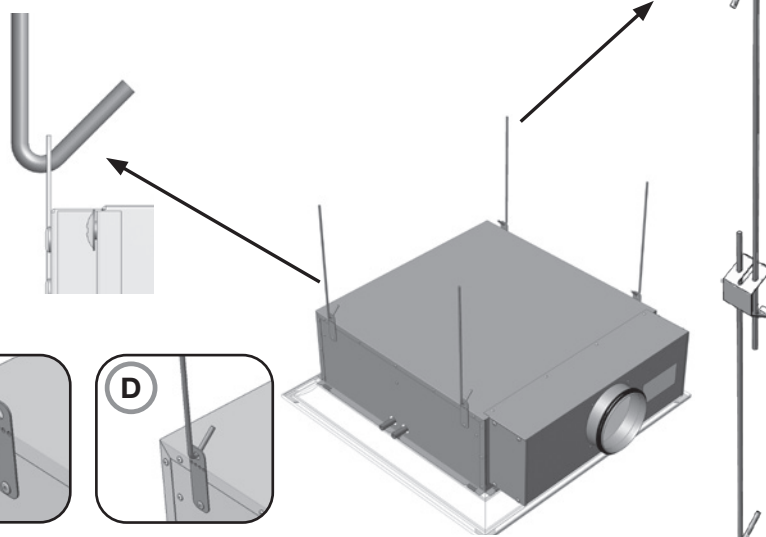
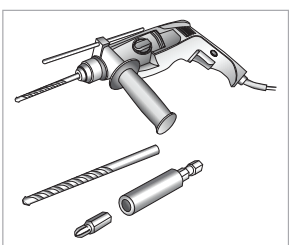
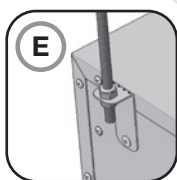
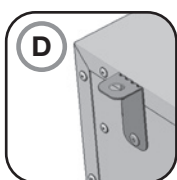
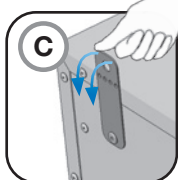
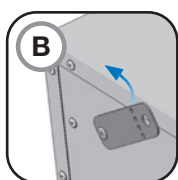
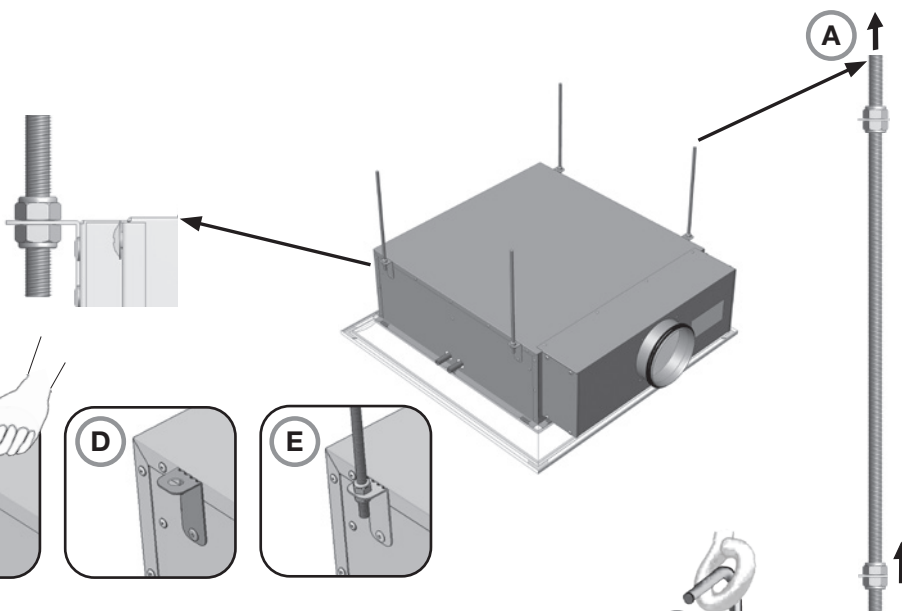
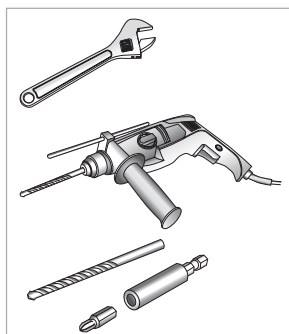
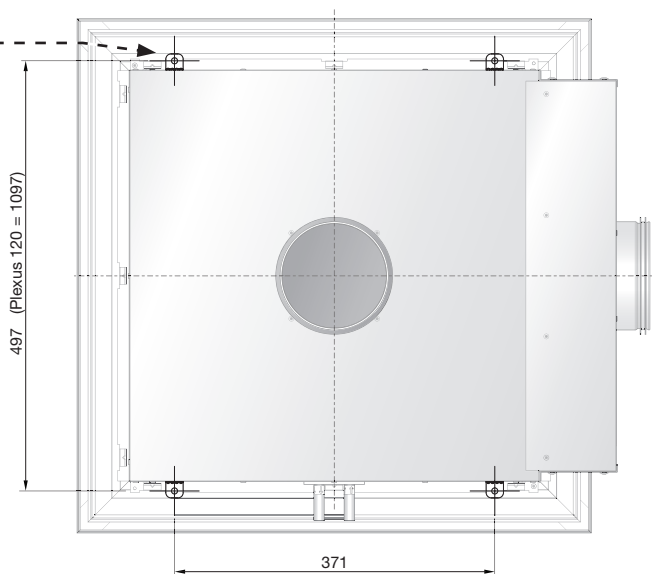
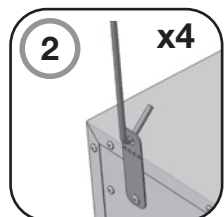
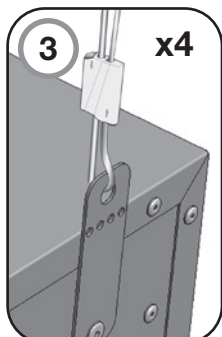
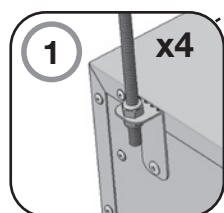


(Med beskyttelsesdæksel som option)

Hurtig installationsvejledning

Plexus

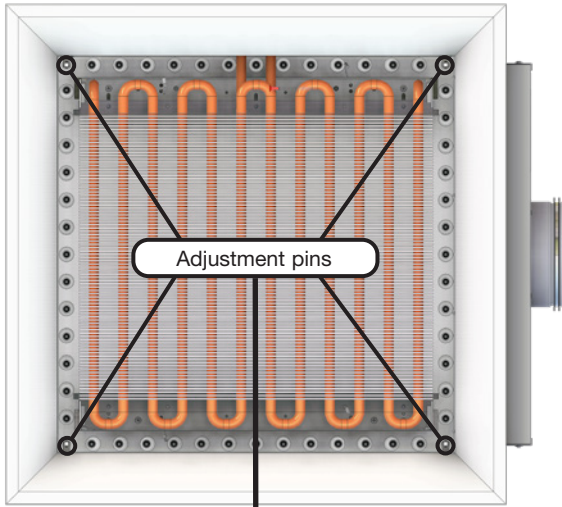
Montering af produkt



Hurtig installationsvejledning

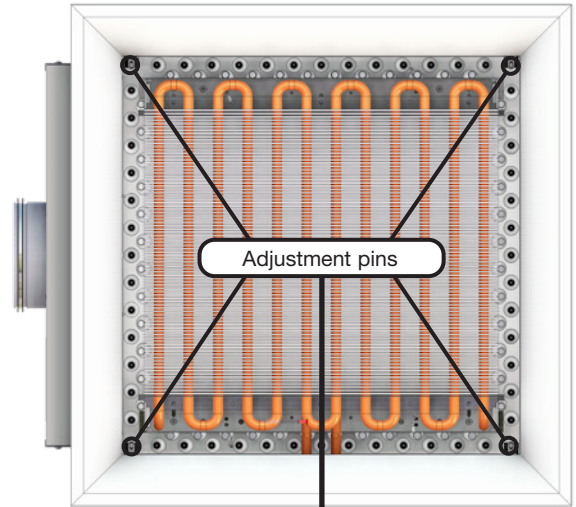
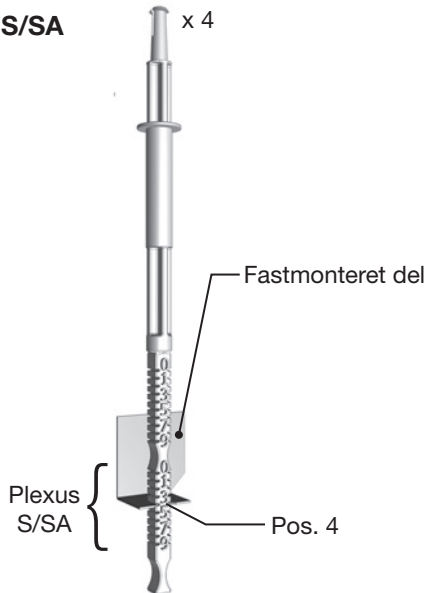
Plexus

Justering af JetCones



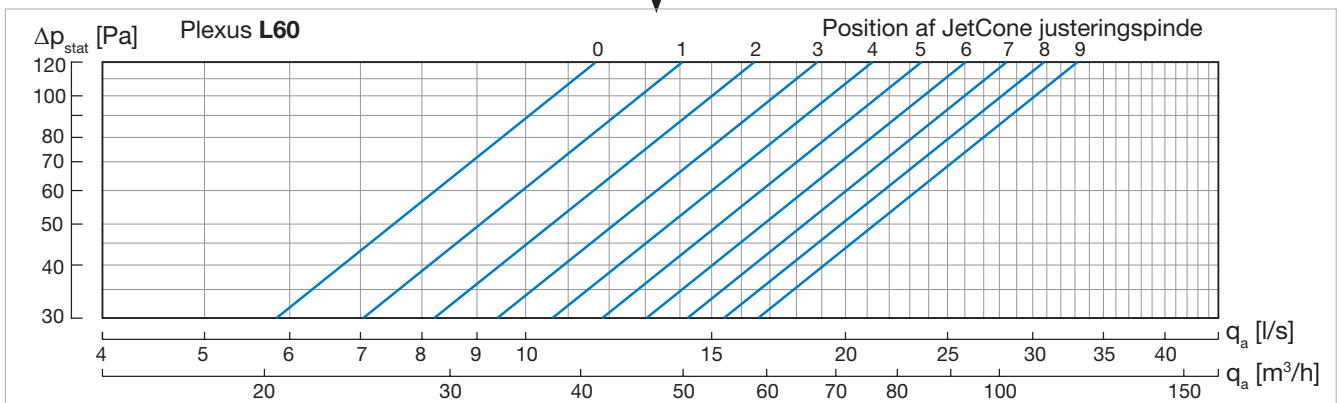
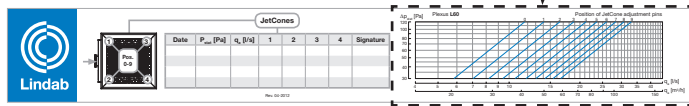
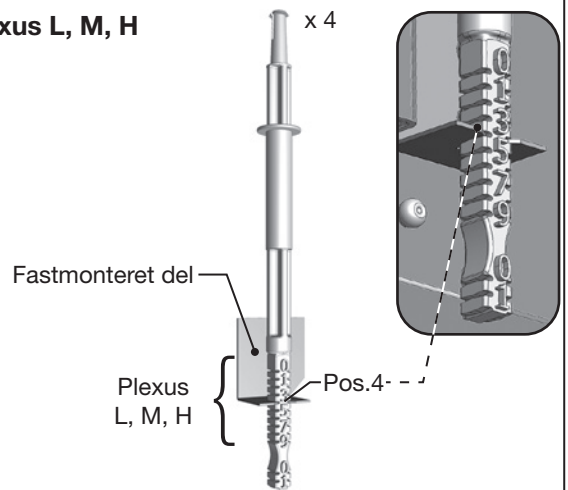
Plexus S/SA

x 4



Plexus L, M, H

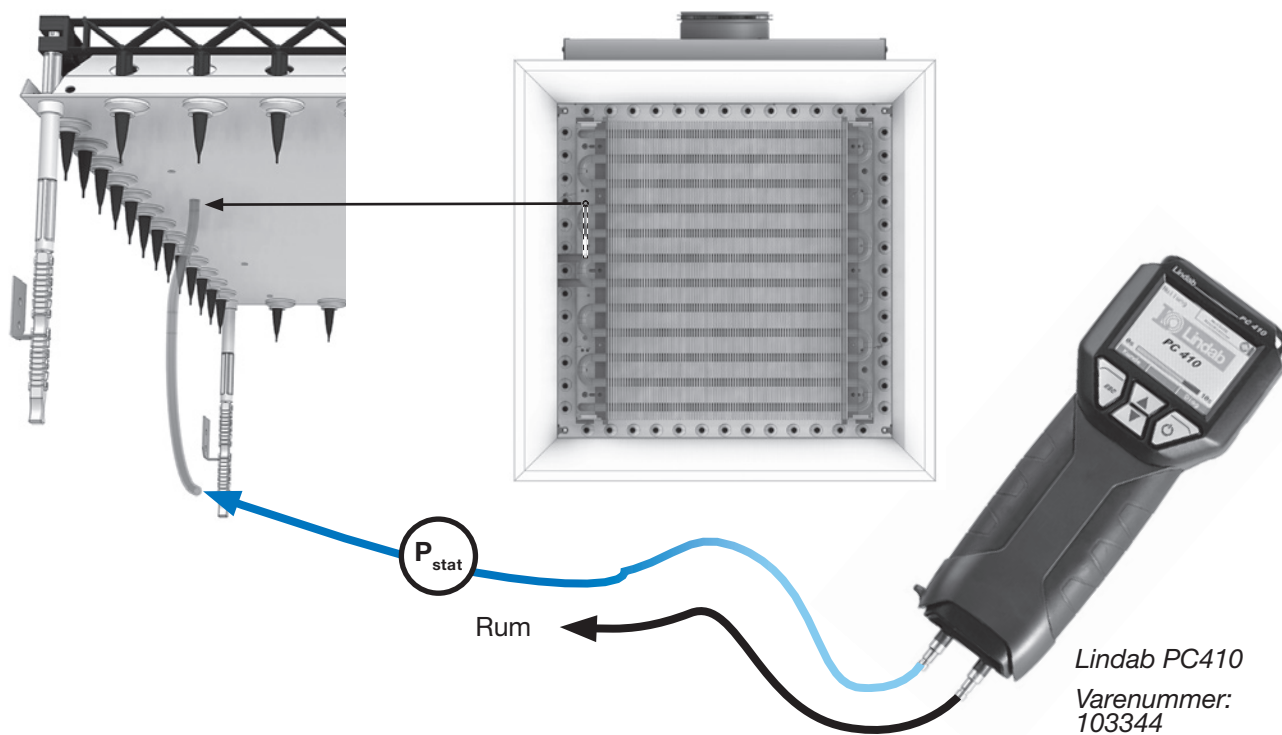
x 4



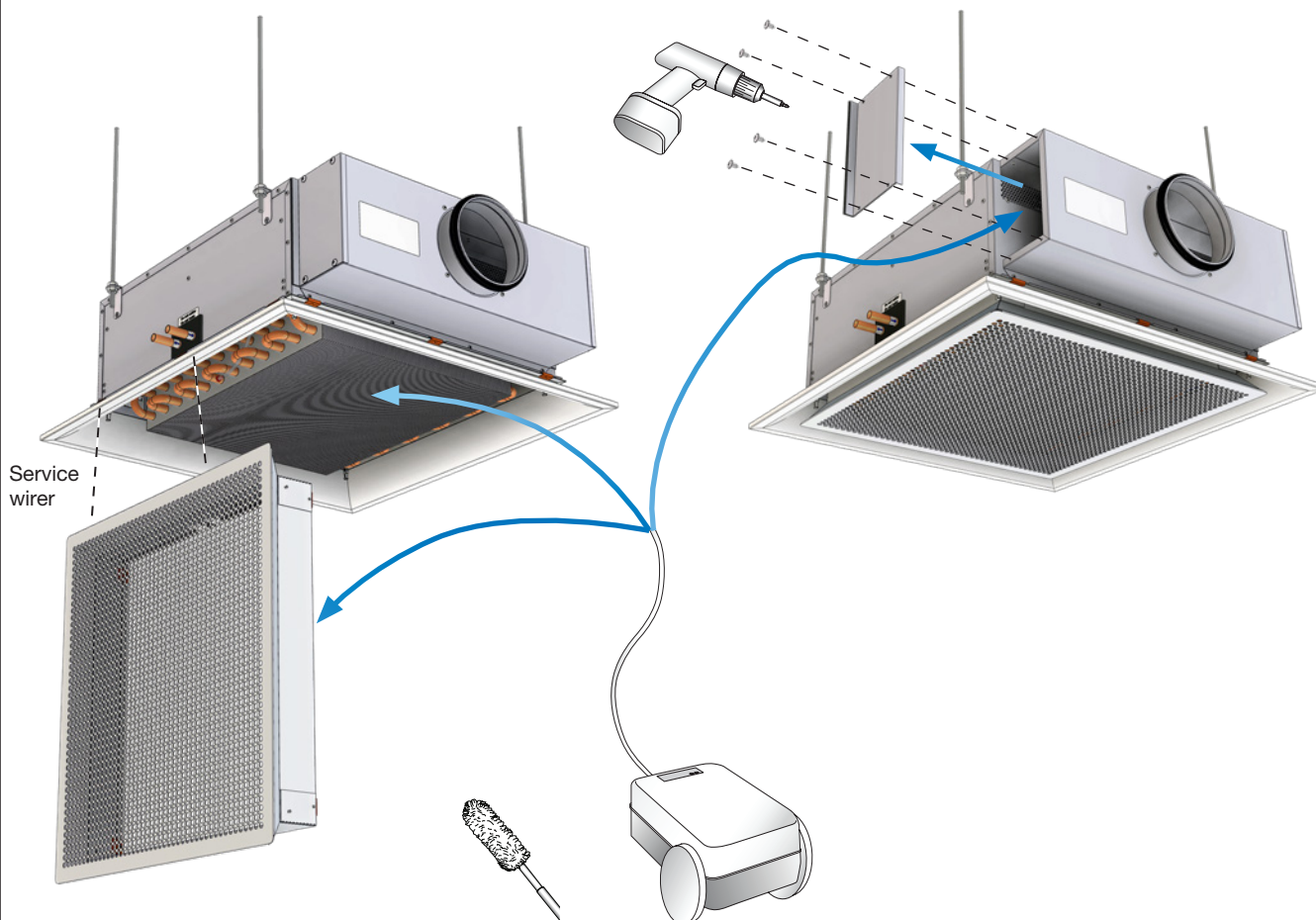
Hurtig installationsvejledning

Plexus

Måling af statisk dysetryk



Vedligeholdelse





De fleste af os tilbringer størstedelen af vores tid indendørs. Indeklima er afgørende for, hvordan vi har det, hvor produktive vi er, og om vi holder os sunde.

Hos Lindab har vi derfor gjort det til vores vigtigste mål at bidrage til et indeklima, der forbedrer menneskers liv. Det gør vi ved at udvikle energieffektive ventilationsløsninger og holdbare byggeprodukter. Vi stræber også efter at bidrage til et bedre klima for vores planet ved at arbejde på en måde, der er bæredygtig for både mennesker og miljøet.

[Lindab | For et bedre klima](#)